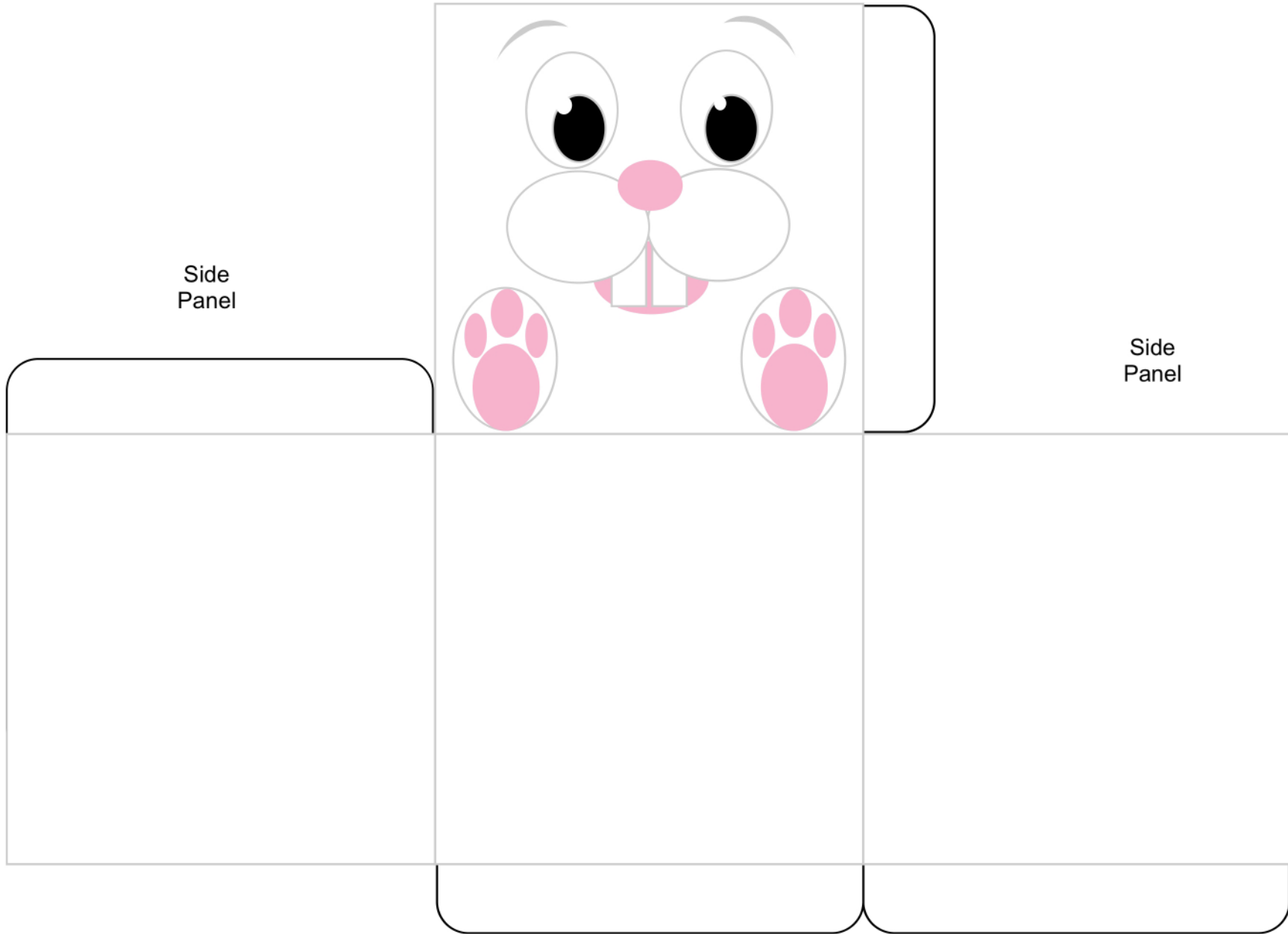


Front Panel

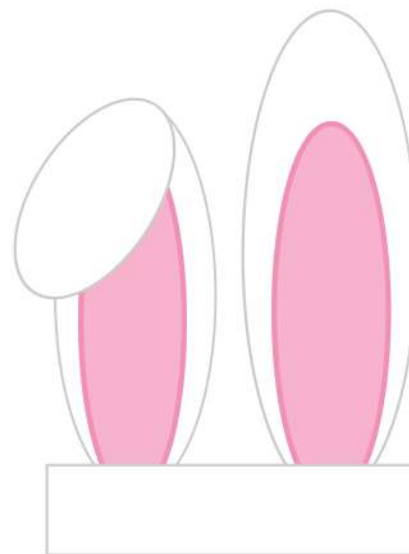
Side
Panel

Side
Panel

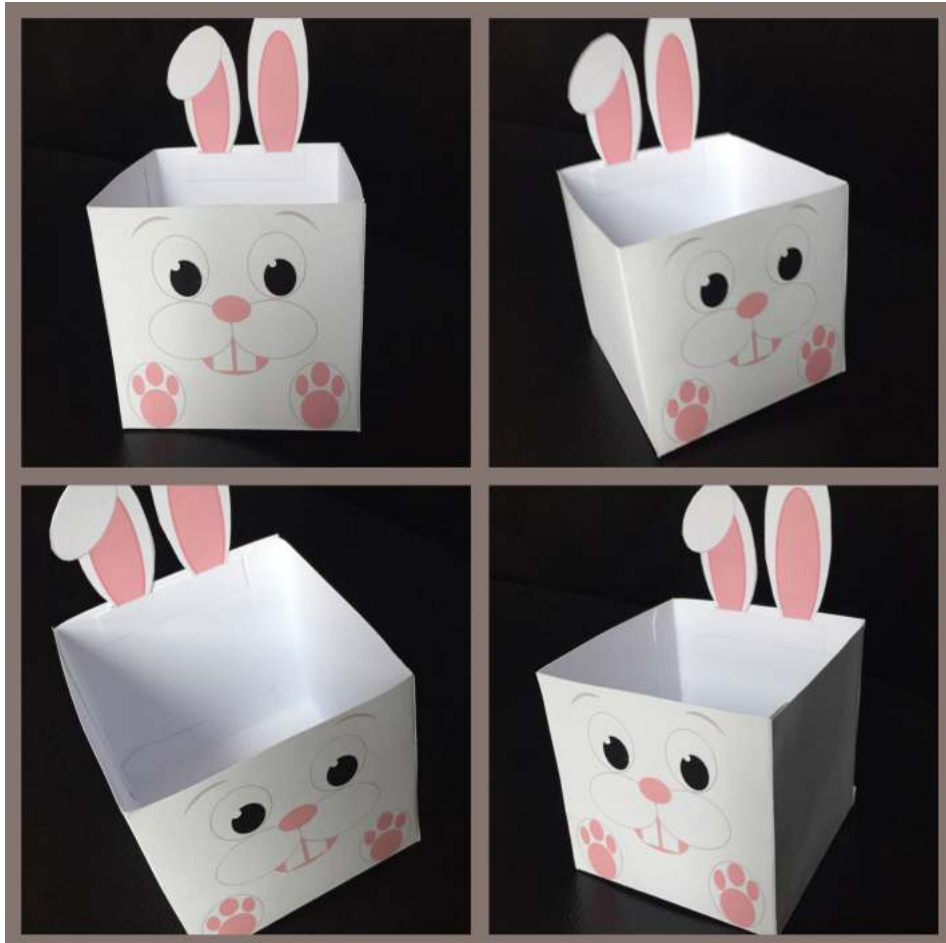




Back
Panel



Instructions



MATERIALS:

- Good quality 8.5"x11" or A4 white card stock (suggested 200gsm)
- Glue or double sided sticky tape
- Scissors and craft knife

INSTRUCTIONS:

STEP 1. Print the template(s) on to good quality white card stock.

STEP 2. If required score along the fold lines for easier folding.

STEP 3. Using a craft knife or scissors carefully cut around the outline shape of the box and bunny ears from both sheets.

STEP 4. Fold along all of the fold lines.

STEP 5. Fold all of the white tabs inwards and tape or glue to the other side. Base and side tab to be attached to the single side panel on separate sheet.

STEP 6. Finally attach the bunny ears to the inside of the back panel.

NOW YOUR EASTER BOXES ARE READY!